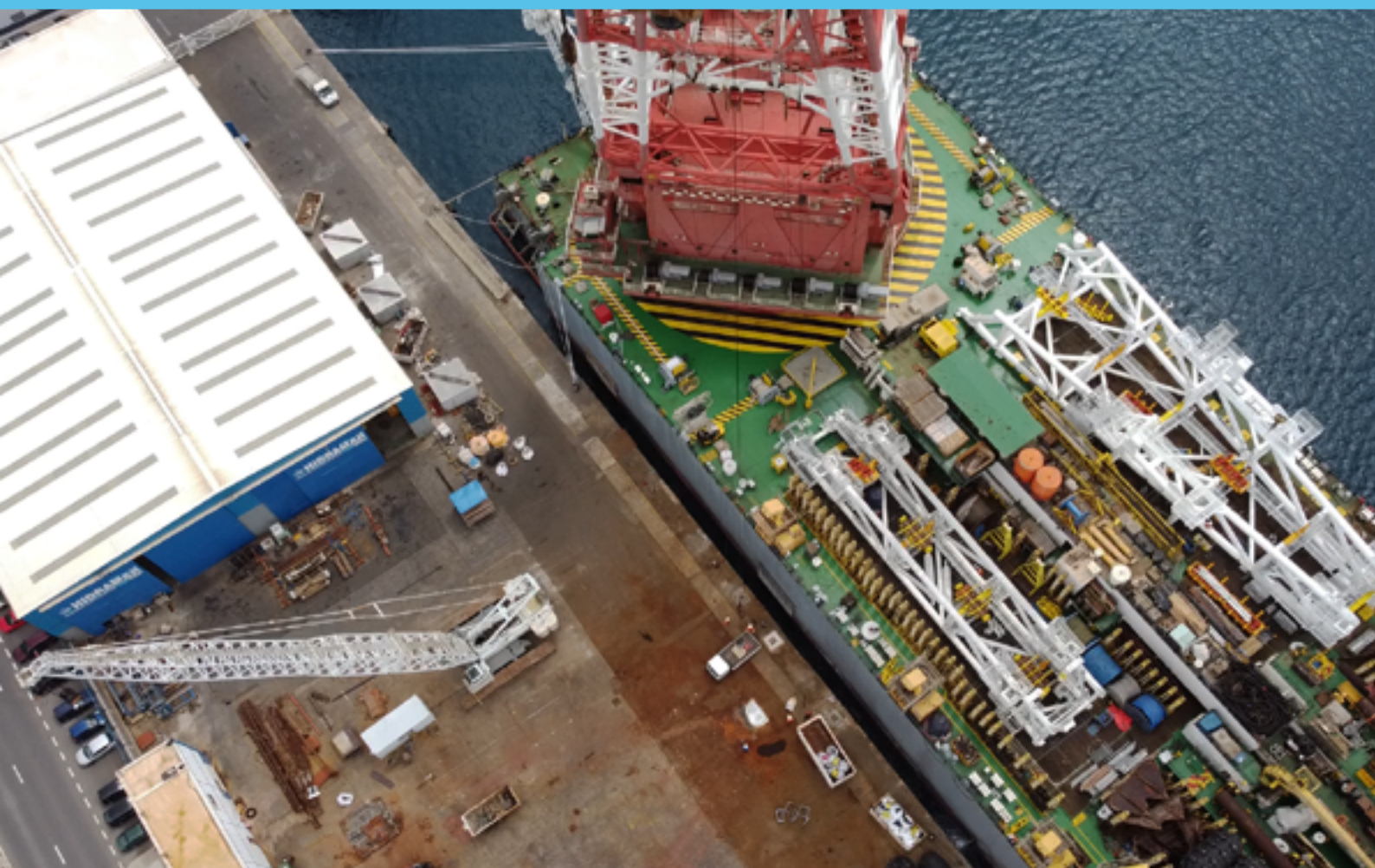




SHIPYARDS



One Team, One Vision



HIDRAMAR GROUP HOLDING COMPANY

We started in the 80s as a family-owned repair hydraulic workshop in Las Palmas Port. Hidramar group soon became recognized in the region for its quality service, its commitment to the clients and its cost-effective policy.

As the requirements of the clients challenged us, we developed different inhouse services, expanded our facilities and built a qualified team to set our brand as the most efficient shipyards in the region.

VISION & MISSION

Our vision

To become a preferred shipyard partner in the Canary Islands, Atlantic Ocean for the Global Oil & Gas and Marine industry.

Our mission

To provide cost-effective and efficient offshore project management, marine engineering and quality shipyard general services to our valued clients globally through our highly skilled internal staff.



HIDRAMAR SHIPYARDS

Reina Sofia (ISPS), Las Palmas de Gran Canaria

Hidramar Shipyards secure world-class ISPS quayside facility located at Reina Sofia Dique in Las Palmas de Gran Canaria offers a berth line capable for post panamax size vessels , alongside pipe and steel workshops, 20 m water depth at quay and increases in angle > 26m, capable of operate a 600 Tons crane at the quayside.



Free-Trade Zone, Las Palmas de Gran Canaria

Hidramar Group's early steps were developed on the free trade zone located within the concurred Las Palmas Port. Well-capable hydraulics, machining and mechanical workshops on a side of logistics yards are in place to deliver a broad variety of services for the naval and energy sector.



TENERIFE SHIPYARDS

Free Trade Zone at Dique del Este, Santa Cruz de Tenerife

Tenerife Shipyards management office and workshops are located in the deepwater and well-sheltered port of Santa Cruz de Tenerife, alongside RoRo Terminal with direct waterfront access for shipyards operations.

Our facilities in this Free Trade Zone, offer also 700 m of quayside, and 460 of berth line, outstanding fabrication capabilities and specialized hydraulics & mechanical workshops.



Muelle de Rivera Granadilla Port

Tenerife Shipyards with 300 m of quayside an just 10 Km from an international airport, is located in this new Port that offers the unique set-up with deep water piers and thousands of meters of yard space for great scale project execution. Tenerife Shipyards has being delivering several project on this locations during the last years and is currently investing to set a world class base to keep expanding its shipyards capabilities while becoming a world reference for offshore assets fabrications.





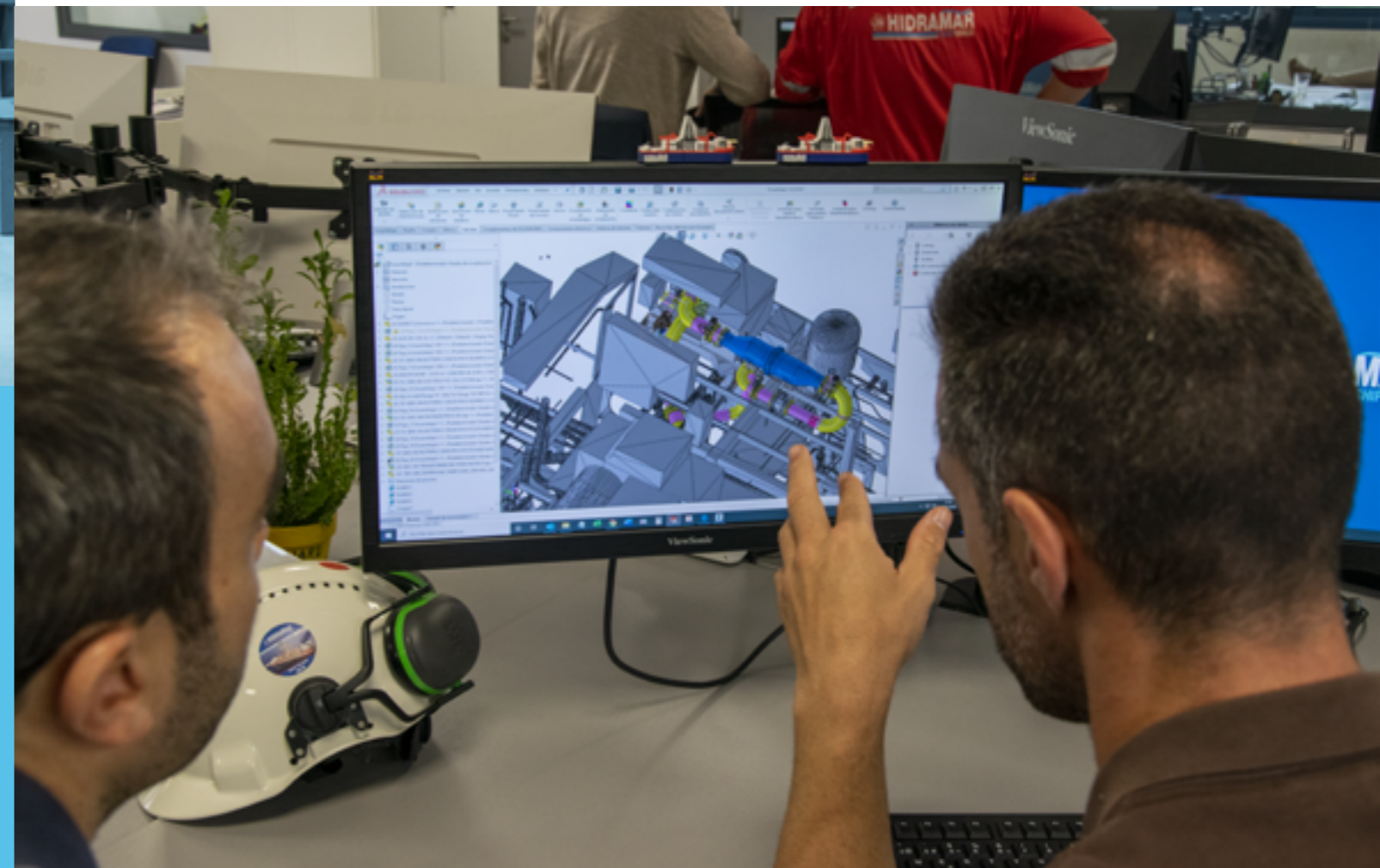
POWERFUL ENGINEERING AND DESIGN

A combination of know-how, cutting-edge technologies, outstanding facilities and full commitment to safety and quality standards are the strengths of our Engineering Department.

As the major demand of the naval sector is swift and effective solutions, engineering is basic to successfully undertake any project safely all the way through, within the expected time on the allotted budget.

We deliver turnkey solutions since the feasibility study up to the final commissioning. Relying in our inhouse 3D Scanning and modeling, Solid Works Model and Design, Structural analysis and Detailed Engineering.

While the execution, our project management, cost controller and procurement team efficiently drive our efforts until the successful delivery. Without mattering the SoW complexity, our multidiscipline engineering team makes the difference to cover all the branches related to the naval and Oil & Gas sector.



RETROFIT, MOB AND DEMOB

Oil and Gas experience to fulfill the standards for any modification projects without matter size or location. The trust of our demanding Clients have positioned our Group as one of the best options for this kind of services.

Aware of the challenges involved with the ongoing changes in environmental policies, **we have developed solutions for air and water pollution controls.** Is our engineering and shipyards inhouse capacities what differentiate us; openly working closely with different manufacturers and compliant with Class Societies that enables to deliver turnkey projects on the committed time and budget.



Check the Mob / Demob video of Ocean Infinity vessel



PIPE AND STEEL FABRICATION AND REPAIRS

Our lean manufacturing processes and in-house personnel experienced in the demanding procedures of the Oil and Gas Industry works close with the engineering team to ensure we deliver the best pipe and steel works option in the Region.



Check the piping work video
for a BWTS





We have outstanding workshops facilities equipped with high tech precision machinery, chrome surface treatment plant and operated by our experienced technicians and engineers, capable to design and fabricate hydraulic systems, troubleshooting, repairs, test, certifications, etc. Decades of networking in hydraulics together with mayor manufacturers and providers have set in place the best capacities to procure the right solutions where are most needed, anywhere is requested as our ridding team can go onboard wherever suit better to our demanding Clients.

HYDRAULICS SERVICES

The name of our group comes from our background as a hydraulic workshop. After 30 years we have grown relying on that same workforce that positioned us as the reference on Hydraulics all over West African Region, delivering since our beginnings reliable services to the Fishing fleet and now at days also to the Oil and Gas and Mining industries.



Member:
Hidramar, S.L.

HULL REPAIRS

Afloat time efficient temporary or permanent hull repairs for those who operates in our Region.

We have attained the trust of our great Clients due our inhouse strategy have proven to be the asset to commit prompt deliver and efficient solutions working 24/7.



Check the hull repair video of a tanker vessel



FABRICATION CAPABILITIES

With a proven track record in fabrication, our shipyards offer a wide range of services to fabricate elements for afloat repairs in isolated areas, davits, cranes; hoisting elements such as pulleys and spreader bars.

We used to work with AWS, ISO and ASME codes for structural welding operations, DNV, API and ASME codes for pressure piping and tubing welding operations, our welding experts prove their agility every day to meet our clients' technical requirements.

Using welding processes such as SMAW, FCAW, GTAW, SAW, we weld every day items made of carbon steel, austenitic stainless steel, duplex stainless steel or other corrosion resistant alloys from grade S355, X65, F65 to Inconel 625 & 825 through 306L and 316L. Our induction heating machine and electric resistance equipment allow us to perform all pre and post welding treatments required.

Our blasting and painting facilities have been set-up and equipped to perform surface preparation and coating application according to Norsok M-501.

Ultimately, to carry-out factory acceptance tests especially the pressure testing in safe conditions, a dedicated pit has been implemented with a test bench enabling pressure test up to 2 480 bars / 36 000 PSI.



Check the pontoon repair video
of a semisubmersible





BLASTING AND PAINTING

The highest standards and environmentally friendly solutions on blasting and painting are to be fulfilled on the surface preparation, coating and painting. For it, the right procedures, equipment, and facilities are set in place to support a dynamic workforce monitored by our painting inspectors and quality engineers.

Whether is hull, tanks or interiors, the support of our inhouse auxiliary services allow us to deliver the most convenient option.

Check the coating hull video
of a Maersk vessel



RIDING SQUADS

The connectivity to our strategic location enables to reach promptly all over the West of Africa and Eastern American Region to deliver reliable services where are most needed. Since our origins, we have deployed our technicians where the assets are to bring certainties and guarantees all over the Region.

A remote cooperation with our Clients and mobile workshops supports our multiskilled workforce to bring everywhere the same solutions as we deliver within our shipyards. From steel works to hydraulics and electrical, mechanical or hydraulic troubleshooting. From scaffolding, rope access to diving surveys. Or lifting gear inspections, load test and certifications. Saving time and money to our Clients having the fact to deal with a trustable partner.ç
In addition our team has the seaman boks and BOSIETcertification.

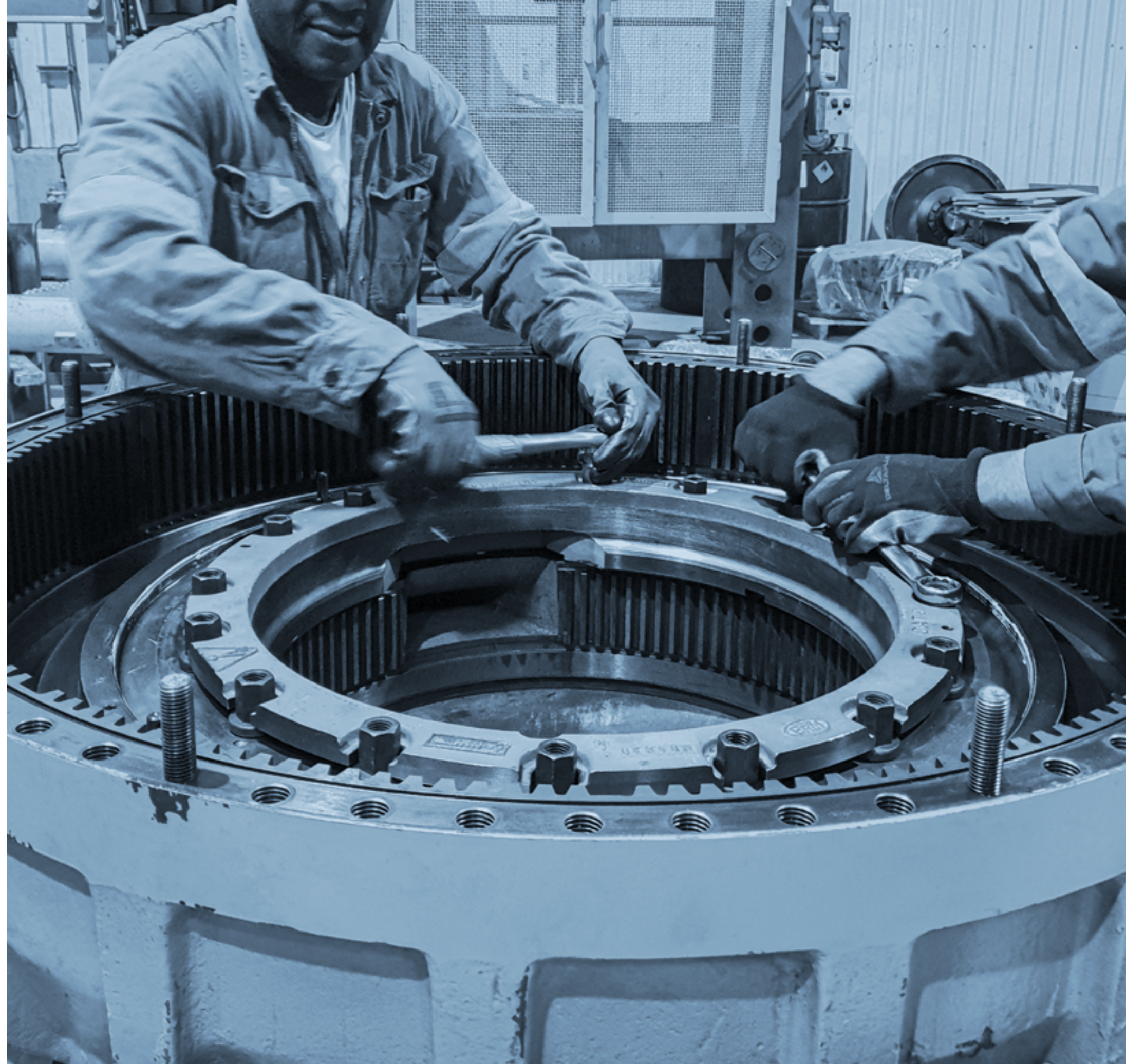


MECHANICS, ELECTRICAL AND ELECTRONIC SERVICES

We have developed a great OEM strategy that has worked perfectly for all parties involved.

As a part of our cost-effective vocation, we support those manufacturers providing excellent facilities and skilled workers. This is how the final Client gets the best service holding the guarantee of their equipment at the most convenient price.

Multiskilled experienced engineers and technicians can be deployed anytime and everywhere they may be needed as we fully understand the meaning of the downtime for our Clients.



AUXILIARY SERVICES

To ensure we deliver within the expected time and quality without relying in third parties, Hidramar Group have set an ambitious in-house strategy for most of the shipyards auxiliary services such as 3D Scanning, Scaffolding, Rope Access, Tank Cleaning solutions, Load Test Certifications, Pressure Test and Non-Destructive Test as some of the demands to deliver full turn-key service on the most cost-effective bases.



Check Scaffold for
ROV doors video
of Helix Q7000



BOLLARD PULL TEST

Our Shipyards services also include the Bollard Pull test which measures the pulling or towing power of watercraft, to ensure the proper operation of the equipment.

Our locations in West Africa have outstanding differentiae for bollards pull test in West Africa, we can perform tests up to 200 T.

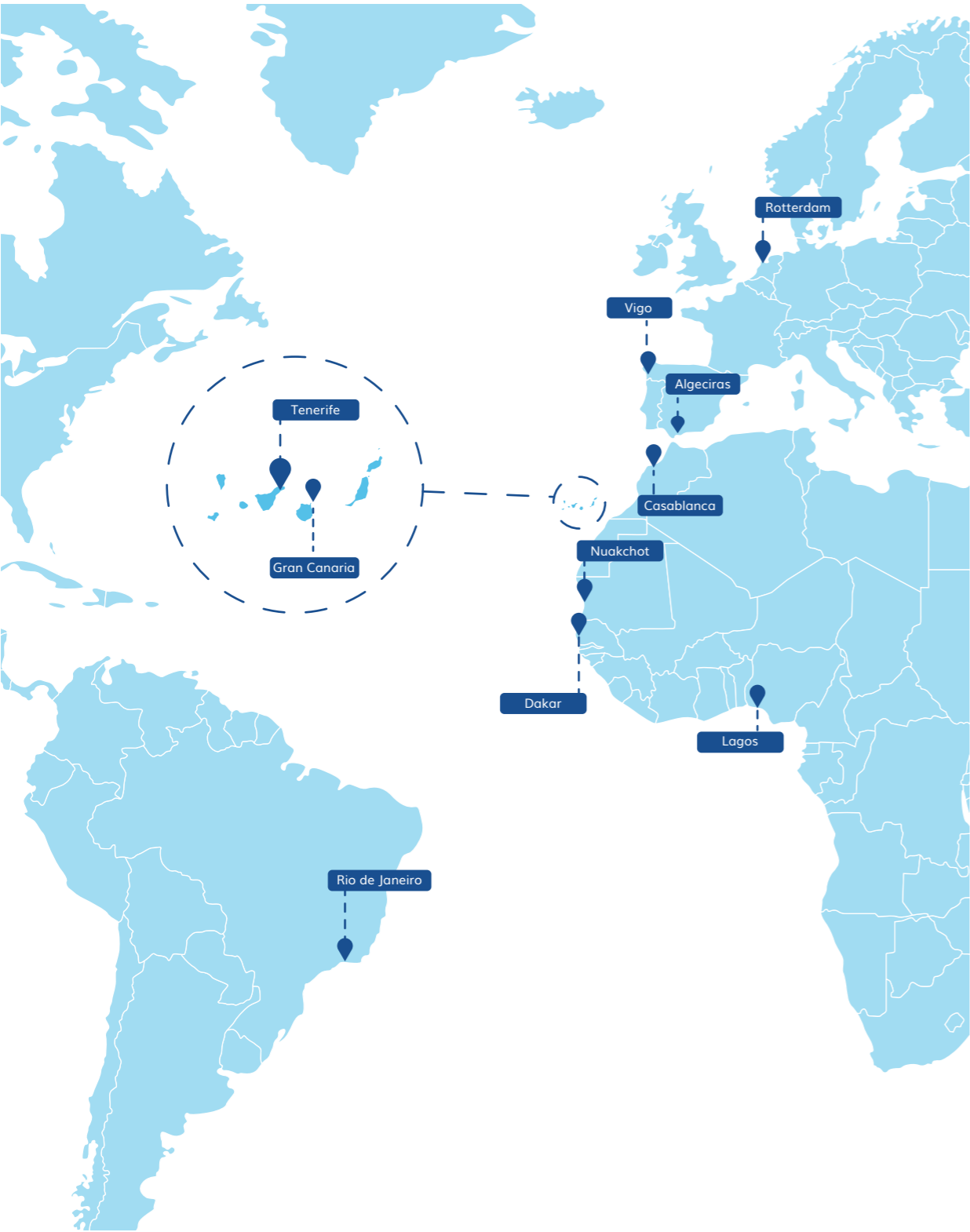


VESSEL HARDENING

We understand the risk your vessels go through traveling across risk areas, we offer a turnkey solution to protect your ship. A well-hardened ship will deter and stop a piracy attack.

Our experienced and highly qualified team will complete your anti-piracy barrier systems in accordance with best management practices BMP.

STRATEGIC LOCATION



No matter how far we keep developing, our strategic location will always be our greatest asset. Outstanding capabilities, our project management processes, in-house services, and quality standards positioned Hidramar Group as a regional reference.

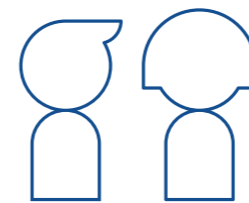


QUALITY, HEALTH, SAFETY, ENVIRONMENT AND SUSTAINABILITY

Hidramar Group operates a comprehensive integrated quality and HSE management system. We are constantly seeking to improve and to ensure that our organizational structure keeps up with other leading international companies standards.

Our quality Management System is based on ISO 9001:2015, our Health and Safety Management System is based on ISO 45001 and our Environmental Management System is based on ISO 14001:2015, all certified by Lloyd's Register.

As our people is the heart of our business,
our commitment goes further.



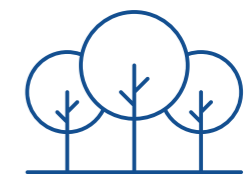
Diversity, gender Equity and social Inclusion

It is not just an aim, but a global business policy. It is about our Group welcoming the talents and ideas of people with different backgrounds, experiences, and attitudes to encourage our continued success in providing clients with the high-quality service they deserve.



Global Responsibility & Sustainability

Our team consciously works together to protect the environment and have a positive impact on the communities where we live and work. We have internship programs that allow us to collaborate with local and international universities, improving opportunities to young people.



Hidramar Group Green

We continuously work to recognize and promote more sustainable alternatives through operational efficiencies, all in an effort to manage and reduce Shipyards effect on the environment.



Member:
Hidramar, S.L.



Certified Company:
Tenerife Shipyards, S.A.



Q1-3177



7-1-1364
SCT - 2182





WWW.HIDRAMARGROUP.COM

comercial@hidramar.com

+34 928 32 78 27/28

Calle Harald Flick, Nave P20,
Las Palmas de Gran Canaria Port , 35008
Canary Islands, Spain

comercial@tenerifeshipyards.com

+34 922 10 49 82

Primera Alineación, Dique del Este,
Santa Cruz de Tenerife Port, 38180
Canary Islands, Spain



UNIÓN EUROPEA
Fondos Estructurales y de Inversión Europeos

